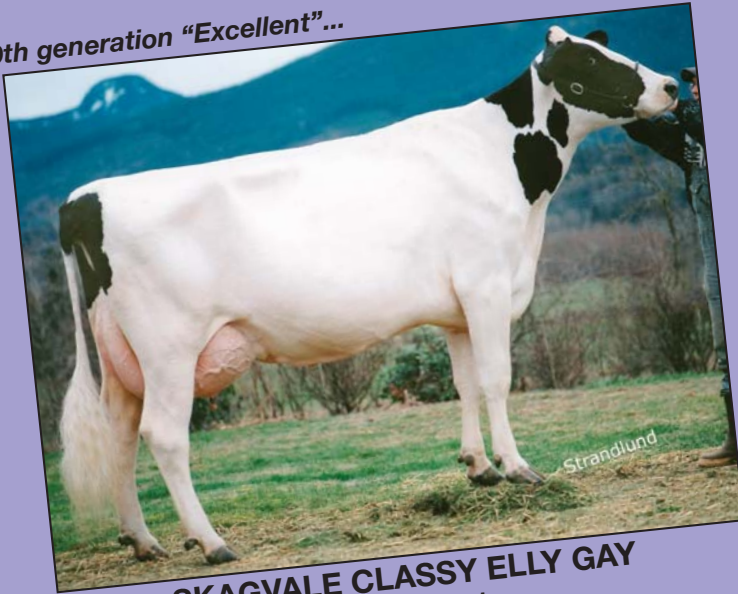


# Skagvale Mainline ... February 2005

## ...featuring the Fabulous Elie Gay Family! Two stars in today's Skagvale herd...

9th generation "Excellent"...



**SKAGVALE CLASSY ELLY GAY**  
Excellent-91

3y 365 2x 28210 3.7 1032 3.2P

See page 4 for  
their positions in the  
ELIE GAY family tree.

**MILAN ELIE** is good, old-fashioned pure power! Her substance of bone, her strength, and her size and scale are dominating! Yet, MILAN ELIE moves like a kitten and has as silky an udder as we've ever seen! She has 2 breeding-age Provost daughters, frozen embryos by Storm and Lee, and will be flushed to Skagvale Legendary.

8th generation "Excellent"...



**SKAGVALE MILAN ELIE GAY**  
Excellent-91

3y 365 2x 24650 3.9 972 3.1P

# Skagvale

where there is no substitute for

"COW SENSE & COMMON SENSE"

# Skagvale Holstein Farms

The story behind how the foundation of the GAY family — PUGET SOUND NETHERLAND GRACE (EX-93) — came to Skagvale Farms was told in the 1994 Skagvale "Changing of the Guard" Sale catalog. To avoid unnecessary repetition, time and space will not be given to those details in this issue of the Mainline. If you are unfamiliar with this tale, copies of the 1994 Sale Catalog are still available for purchase (\$35 each).

Instead, we thought that it would be interesting to highlight how certain key members of this influential cow family came about ... the thoughts behind some particular matings and other insights that are sometimes left only in the heads of the master breeders themselves ... and all too seldom left on paper. A discussion with Dad (John) was necessary!!

The GAY family at Skagvale has long been recognized as one of longevity, high scores and true breeding vigor. Their prominence in today's Skagvale herd practically goes without saying: the influence of this one cow family is enormous, and the GAYs have become, in essence, the "crème de la crème." Through nearly fifty years of careful, studied and artful breeding, we have endeavored to intensify their strong points while at the same time pushing back any weaknesses. Dad and Uncle Glen put hour upon hour of careful research and thought behind the development of the GAYs. It did not happen merely by chance! Perhaps a bit of luck was involved, to be sure. But success has primarily come through matching strengths and avoiding weaknesses; studying cow families and their particular prepotencies; and knowing the kind of cattle we were breeding for ... and sticking to it!!

PUGET SOUND NETHERLAND GRACE (EX-93), who calved eleven times, lastly at 14y2m, had several daughters, although SKAGVALE NETHERLAND GAY (EX) was her most influential daughter within the Skagvale herd. At Grace's purchase by the Tenneson Bros. in 1957, she was in calf to Puget Sound Admiral, and this heifer went on to score 89 points, made over 1000F and was a class-winner at the Oregon State Fair in 1960. Four or five daughters of Grace were merchandised.

GRACE was an outstanding show cow for John and Glen, and while in Vancouver, B.C. (Canada) at the Pacific National Exhibition she came in heat. At this time, Frasea Netherland Trailblazer was a well-proven sire. Frasea Farms and Colony Farms practiced intense linebreeding and Trailblazer was a 100% brother to Grace's sire, Frasea Netherland Inspiration! Both were by Colony Netherland Perfection 36th, from full sisters by Colony Vrouka Heilo Romeo out of a daughter of Colony Colanthus Perfection. All three of these Colony sires were bred extremely close to each other. With the success of linebreeding at Frasea and Colony... two of the herds that Skagvale was basing their breeding backbone upon ... the brothers felt that a mating to Trailblazer was a logical choice! Semen was only available in Canada, but since she came in heat at the PNE, a BCAIC technician came and Grace was bred to Trailblazer! Many of the B.C. breeders at the show told John and Glen that they thought this was simply breeding too close and not a wise decision!! Good thing they didn't listen! This mating resulted in SKAGVALE NETHERLAND GAY (EX), the 2nd generation of "Excellent" cows in the GAY family tree! On another note, when the first pedigree of Netherland Gay was received, it stated that Trailblazer was only scored Very Good. John clearly remembered reading that the bull was Excellent, so he wrote the Canadian Holstein Association a letter asking them to check into this, ... and sure enough, back came the reply that the Association was incorrect and the score was changed in their files!

SKAGVALE NETHERLAND GAY (EX-90) was, in John's memory, the fourth Excellent cow bred by the Tenneson Bros.! (She followed three Puget Sound Prince daughters scored Excellent.) Merle Howard scored Gay Excellent at 6 years, and his advice to John and Glen was to give her an opportunity to make a more respectable milk record as she would prove an important cow to the Skagvale breeding program. Netherland Gay was such an easy breeder that she had very regular calving intervals, and because of this had never made any big records at that time. (Her 3y record does not show as an individual record because she had started it with an abortion.) Unfortunately, despite her abundance of calves (she calved twelve times, lastly at 14y4m), she did not produce many daughters! She was bred naturally to Skagvale Royal Monarch,

who was being used very heavily in the Skagvale herd, a mating that resulted in SKAGVALE DELIGHTFUL GAY (EX), the 3rd generation in the GAY family. This was another very close linebred mating, as Monarch's paternal grandsire, Carnation Madcap Butterboy, was out of a Colony Colanthus Perfection daughter. Monarch's maternal granddam was by Colony Netherland Perfection 36th, the next dam again by Colony Colanthus Perfection. In fact, that cow's maternal granddam was another daughter of Colony Colanthus Perfection (the All-Canadian Aged Cow 1943)!

SKAGVALE DELIGHTFUL GAY (EX-90) did not start as a highly scored cow, scoring a mere 79 points on her first classification. (Although geneticists today may consider this good?!) She was slowly raised from that point, until Lloyd Boyd classified her 89 points at 13 years of age. Classifier Andrew Clawson, upon seeing her at 15 years, was so impressed with her dairyness and rib and how agile she was for a 15 year old cow, that he bumped Delightful Gay to Excellent. Delightful Gay was an exceptional producer, having twelve calves and producing over 236,000 pounds of milk in her lifetime! However, even with those twelve calves, she only gave John and Glen two heifer calves ... a Skagvale Bold Influence daughter who went GP-83 at 3 years and was exported, and SKAGVALE GAY ROCKETTE (EX-93).

The crossing of Delightful Gay to Forest Lee Centurion Rocket follows the same 'linebred' train of thought as previous matings in the GAY family, but in a completely different light. This one integrates another aspect of the Tenneson Bros. breeding strategy ... it was time to bring in an outcross. John and Glen were, of course, well aware that both Frasea Farms and Colony Farms had used Rag Apple blood to great success as an outcross, and since the Skagvale herd was based upon that same Colony-Frasea breeding, they thought they would follow suit. According to John, the theory was that if you were going to bring in an outcross, you brought in a linebred outcross, because then you would understand their breeding patterns much better. The Rag Apple bloodline of Montvic Farms was making the Canadian Holstein famous in those days. They were high testers, had great type, and lived forever. The Montvic herd utilized an absolutely fantastic linebreeding and inbreeding breeding program, creating a "strain" of cattle. Forest Lee Centurion Rocket's dam was an inbred Rag Apple. In fact, she was a very inbred cow, being by the same bull (Houckholme Sovereign Skyrocket) as her own dam! Centurion Rocket's sire was Rosafe Centurion, a maternal brother to Rosafe Citation R who was being used as a Rag Apple outcross at Skagvale. Centurion Rocket sired a very strong pattern; his daughters were big, powerful cows, yet they milked. Skagvale Delightful Gay, like many of the intensely-bred Frasea-Colony cattle, was a bit closer to the ground but with great dairy-strength, making this a great cross. It worked! The resulting calf, Skagvale Gay Rockette, followed form.

Yes, Gay Rockette was a really big cow! She was a proverbial powerhouse, being deep, long and wide. Gay Rockette scored 93 points at 7 years of age, and was one of Skagvale's greatest Brood Cows, being the dam of 4 "Excellent" daughters and an "Excellent" son. Of her four "Excellent" daughters, Telstar Gay (EX-92), Maple Gay (EX-95) and Lenmary Gay (EX) were all natural calves, with Tempo Gay (EX-91) being the result of an ET flush. Gay Rockette's influence on the Skagvale herd could be a chapter all by itself. She produced the first real "branching" of the GAY family in the Skagvale herd, as three of her four "Excellent" daughters at Skagvale all had own daughters who passed along the true GAY type. (Lenmary Gay never had any daughters.)

Along came the 70s and with it came the Japanese, who were, in John's own words, paying amazing prices for cattle! The higher the price, the better they felt the animal was!! Gay Rockette was spotted out in the pasture one day by a group of Japanese dairymen, and they were impressed! As a result, a

# Skagvale's "GAY" cow family tree

## Foundation cow in Skagvale's "Gay" family



**PUGET SOUND NETHERLAND GRACE**  
Excellent-93  
LT: 217,547 3.5%F  
S: Frasea Netherland Inspiration

## 2nd gen. "Excellent"



**SKAGVALE NETHERLAND GAY**  
Excellent-90  
LT: 198,100 3.8%F  
S: Frasea Netherland Trailblazer

## 3rd gen. "Excellent"



**SKAGVALE DELIGHTFUL GAY**  
Excellent-90  
LT: 236,850 4.1%F  
S: Skagvale Royal Monarch

## 4th gen. "Excellent"



**SKAGVALE GAY ROCKETTE**  
Excellent-93 GMD  
LT: 218,810 3.6%F  
4 "Excellent" daughters and an "Excellent" son  
S: Forest Lee Centurion Rocket

daughter was sold to them for a very nice figure, and later a son, Skagvale Trouper, was also exported to Japan ... for a huge price! In fact, a Holstein employee once told John that if he knew how much money the Holstein Association had made off the sale of Trouper, he would be shocked! John just smiled and responded that he didn't care how much Holstein had made as the Tenneson Bros. were more than happy with their share of the pot! As an older cow, Gay Rockette was sent to Carnation Farms to flush, but a cancerous tumor in her head ended her life shortly after. She had ten natural calvings and was last checked by the classifier at 13y6m.

SKAGVALE MAPLE GAY (EX-95), a Citation R Maple daughter, was Skagvale Farm's very first homebred 95 point cow! True to the Tenneson Bros. breeding discipline, she was the result of another cross to intense Rag Apple blood. (R Maple was a Rosafe Citation R son from a Rag Apple dam as well.) When John was on a speaking engagement to New York State, he visited the herd where R Maple was proven, and was extremely impressed with his daughters. R Maple made them more stylish and dairy, and as Gay Rockette was more strength than dairy, John thought this would be a good cross. Interestingly, R Maple was one of the early famous type bulls at ABS, and the mating was on contract for a bull (as was Gay Rockette herself). Centurion Rocket and R Maple were two contract sires used by Skagvale Farms that actually threw good daughters.

Maple Gay was the dam of seven "Excellent" daughters and two "Excellent" sons, and according to John, she never had a bad one! In fact, her 11 classified daughters averaged 88.9 points (7 EX, 3 VG and 1 GP). Maple Gay had seven natural calvings, which produced three Excellent daughters. She was then put on an extensive ET program. SKAGVALE ELIE GAY (EX-93) is probably her most well-known daughter. Marshfield Elevation Tony had never been used at Skagvale (and has only been used on one mating since), but the flush resulted in three bulls (one of which was exported to South America) and the one heifer: Elie Gay. She was a great big cow with a tremendous uphill run, a wide chest, a deep body and a beautiful udder. Her rump was one of the proverbial "box car rumps;" a Canadian classifier looked at Elie Gay and said that there was no way in heck that she was a Mars Tony! He had never seen a Tony daughter with a rump like that! (Of course, Elie Gay being an ET calf, had been bloodtyped to prove her parentage.)

Although Skagvale Elie Gay had four "Excellent" daughters and two "Excellent" sons (who were both used extensively in the Skagvale herd), her most well-known offspring are SKAGVALE CASSIE ELIE GAY (EX-92) and SKAGVALE COUNTRY ELIE GAY (EX-95). Cassie Elie was the

result of wanting to bring the Cassie Family (intense Frasea-Colony-early Carnation) back into the herd, as they had produced hardly any heifers themselves. Skagvale Classic Citation was a Citation R son (bringing back in that Rag Apple cross) of Skagvale Delightful Cassie (EX-91), a Skagvale Royal Monarch daughter who was out of an Excellent-91 Puget Sound Prince daughter. Monarch and Prince were both intense Frasea-Colony-early Carnation blood. Classic Citation was sold to UBI, and was one of their popular bulls of the day. However, he hadn't been used at Skagvale as a young bull because almost every animal in the herd had a shot of Monarch already in it, and the Tenneson Bros. didn't think Monarch was a bull they could double close up, primarily because of the Royal Master influence. So, long after Classic Citation was dead, to bring some Cassie blood back into the herd, Elie Gay was ET singled to Classic Citation, resulting in Cassie Elie Gay. Cassie Elie was the dam of SKAGVALE EMPHASIS ELIE GAY (EX-94), sired by Skagvale Emphasis whose dam's granddam was a son of old Puget Sound Netherland Grace. Emphasis Elie Gay was one of Skagvale's greatest show cows in the 90s and an extremely influential cow in the current herd with five Excellent daughters to date, bringing in old Grace both on the top side and the bottom side of pedigrees.

The other dominant breeding daughter of old Elie Gay was SKAGVALE COUNTRY ELIE GAY (EX-95), who was also a tremendous show cow in the late 80s to early 90s in the Pacific Northwest, and was a great producer of daughters, including four "Excellent" daughters to date (one at 95!). Skagvale Elie Gay was bred naturally to Countryman (who is deep in Colony blood), as the two bulls being used extremely heavily in the Skagvale herd at that time were Countryman and Sophisticate, who was Elie Gay's own son. The result is Country Elie Gay, ... and 'history,' as they say.

## 5th gen. "Excellent"



**SKAGVALE TELSTAR GAY**  
Excellent-92-2E  
LT: 117,870 4.0%F  
S: Roybrook Telstar



**SKAGVALE MAPLE GAY**  
Excellent-95 GMD  
LT: 156,210 3.8%F  
7 "Excellent" daughters and 2 "Excellent" sons  
S: Citation R Maple



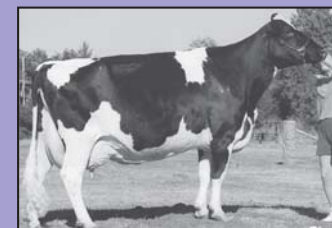
**SKAGVALE TEMPO GAY 2ND**  
Excellent-91  
LT: 192,880 3.5F 3.1P  
S: Roybrook Tempo

## 6th gen. "Excellent"

We know of at least 5 additional 5th generation Excellent cows with the Skagvale prefix from the 3 cows at left!



**SKAGVALE PROUD GAY**  
Excellent-91  
LT: 119,880 3.6F 3.1P  
S: Tiho Kit Builder



**SKAGVALE ELIE GAY-ET**  
Excellent-93  
LT: 164,460 4.0 3.4F  
4 "Excellent" daughters and 2 "Excellent" sons  
S: Marshfield Elevation Tony



**SKAGVALE PREFERRED T GAY-ET**  
Excellent-91 (RC)  
6y 365 3x 32510 3.9 1258 3.3P  
LT: 126,960 3.8F 3.4P  
S: Skagvale Preferred

## 7th gen. "Excellent"

There are at least 5 additional 7th generation Excellent cows bred by Skagvale from the Gay family.



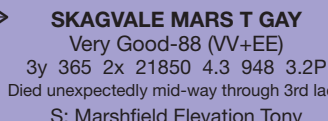
**SKAGVALE FANCY GAY**  
Excellent-90  
LT: 204,000 4.3F 3.3P  
S: Willowholme Mark Anthony



**SKAGVALE CASSIE ELIE GAY 2-ET**  
Excellent-92  
4y 365 2x 24720 4.1 1015 3.6P  
S: Skagvale Classic Citation (RC)



**SKAGVALE COUNTRY ELIE GAY**  
Excellent-95  
5y 365 3x 34240 3.7 1283 3.1P  
LT: 117,320 3.6F 3.2P  
4 "Excellent" daughters  
S: Skagvale Countryman-ET



**SKAGVALE MARS T GAY**  
Very Good-88 (VV+EE)  
3y 365 2x 21850 4.3 948 3.2P  
Died unexpectedly mid-way through 3rd lact.  
S: Marshfield Elevation Tony

# Skagvale Holstein Farms

## 8th generation "Excellent"



**SKAGVALE EMPHASIS FANCY GAY**  
Excellent-90  
5y 365 3x 42250 3.5 1498 3.3  
LT: 174,980 3.6F 3.4P  
S: Skagvale Emphasis-ET



**SKAGVALE EMPHASIS ELIE GAY**  
Excellent-94  
7y 365 2x 36890 4.9 1817 3.2P  
LT: 140,940 3.9F 3.2P  
5 "Excellent" daughters  
S: Skagvale Emphasis-ET



**SKAGVALE PREFERRED ELLY GAY**  
Excellent-95  
7y 365 2x 36580 3.8 1390 3.2P  
LT: 145,010 3.6F 3.3P  
S: Skagvale Preferred (RC)



**SKAGVALE MILAN ELIE GAY-ET**  
Excellent-91  
3y 365 2x 24650 3.9 972 3.1P  
S: Shoremar Milan



**SKAGVALE BENEFACTOR T GAY**  
Excellent-93  
4y 365 2x 32780 3.1 1011 3.1P  
S: Skagvale Benefactor

## 9th generation "Excellent"



**SKAGVALE SENATOR F GAY 2-ET**  
Excellent-91  
3y 297 2x 22770 3.8 872 3.3P  
S: Nelacres Johanna Senator



**SKAGVALE COUNS ELI GAY 4-ET**  
Excellent-91 (2nd lact.)  
3y 320 2x 20490 4.0 828 3.1P  
S: Carnation Counselor



**SKAGVALE BUCK ELIE GAY 2-ET**  
Excellent-90  
3y 293 2x 20600 3.9 799 3.2P  
S: Hanoverhill Starbuck



**SKAGVALE BUCK ELIE GAY-ET**  
Excellent-90  
3y 316 2x 29250 3.8 1120 3.1P  
S: Hanoverhill Starbuck



**SKAGVALE CLASSY ELLY GAY**  
Excellent-91  
3y 365 2x 28210 3.7 1032 3.2P  
S: Skagvale Confidence-ET

# Skagvale Holstein Farms

## the SKAGVALE MAINLINE ...

a journal of practical information for breeders of Holstein cattle, issued by Skagvale Holstein Farms, Tenneson Bros., Sedro-Woolley, WA 98284. Phone Carolyn at (360) 855-9338; Mark, 856-1752; fax 856-0527; or email: skagvale@hotmail.com. Visitors are welcome, by appointment. —Carolyn Tenneson, editor

## News & Notes ...

As I write this on January 8, the fields are blanketed by a few inches of snow, and we have just made it through a week of cold Northwest weather. I know that those of you in the Midwest and East may merely laugh at hearing about 18° nights, but out here in the West, our exposed water pipes, uninsulated and unheated drinking cups and floats, and open barns all spell trouble when the temperatures dip much below 25°. Pipes freeze up mighty fast when they are totally unprotected!

Fortunately, the majority of our winters are fairly mild. Still ... weeks like this makes us think about merchandising cattle, so: **BE PREPARED!!!** This Summer will find you ... the buyers ... in the drivers seat once again in an incredible opportunity to buy herd-building cattle at your own prices!! Yes, another Skagvale Sealed Bid Sale is in the works, and you should be prepared!! In addition to roughly 10 fancy, deep-pedigreed "cow family" Holsteins from the Skagvale herd (including, of course, Elie Gay family members ... What an opportunity to influence your herd!), this Summer's edition will also feature several mouthwatering Jersey heifers from Dad's topnotch Elysian Meadows herd (I know there will be a Renaissance calf offered!!), ... as well as some items of Holstein memorabilia from Dad's extensive collection of 'antique' auction catalogs, breed magazines, etc.

So, go ahead and do some mid-Winter dreaming about what Skagvale or Elysian Meadows breeding stock could do for your herd, and then be ready come Summer! Don't Regret!

## from California...

Larry Gerber of JLG Holsteins (Oakdale, CA) recently raved with absolute delight about his Skagvale-bred "Excellent," a Lee daughter of Skagvale Country Elie Gay (EX-95)! She was purchased for \$4,500 in our 2001 "2nd Tag-Bid Sale," and scored EX while fresh just 30 days with 2nd calf! Larry was practically bubbling over with excitement, commenting that he expected her to re-score 92 or 93 in a few months, and that he plans to show her this Spring. Interestingly, we have a full sister to Larry's cow, Skagvale Lee Elie Gay-ET (EX-91-2nd lact.), who is without a doubt one of the best cows at Skagvale! Her Counselor son, Skagvale Legendary, has started extensive use in our herd.

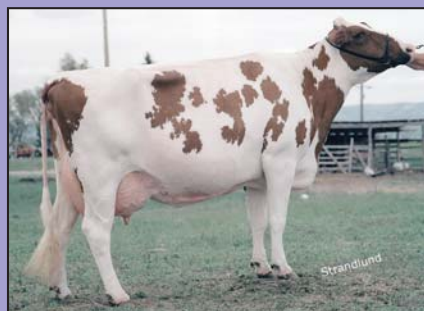
## from Pennsylvania...

Gleaned in November from the Holstein World's website: "Scarlet Summer Holsteins, owned by Jarrod and Marsha Burleigh of Muncy, PA, recently scored a small group of cows on a breeder's choice classification. ... Three recently purchased cows from an unscored herd provided a bright spot for the day. ... Eagle-Mtn MB Paris, a 7-yr-old Skagvale Masterbuilder dtr scored EX-91, EX-98-DC. Eagle-Mtn MB Gold Dust, another Skagvale Masterbuilder, also scored EX-91 @ 6 yrs. with an EX udder ..."

Skagvale Masterbuilder, a Puget Sound Provost son of Skagvale Emphasis Elie Gay (EX-94), was sold as a calf to Elam Stoltzfus (Jersey Shore, PA). Elam used Masterbuilder naturally in his own Eagle Mtn Holstein herd with obvious great success! Masterbuilder's full brother, SKAGVALE PROMISE-ET, has semen available from Skagvale for \$10/unit! (See back page).

## Success Stories in Other Herds with the Elie Gays ...

### from Idaho...



**SKAGVALE CRYSTAN ELI-RED-ET**  
VG-86 (3rd lact.) E+EVV  
4y 305 2x 20,530 3.7 751 3.1P

(record made on rotational grazing & very limited grain)

Purchased by David Roberts (Preston, ID) for \$7,269.99 in Skagvale's Sealed Bid 2 Sale in 1999.

David writes: "...I really think she has the potential to score higher, possibly even EX on the right day. She has amazing width from end to end and is extremely long. She has been a pleasure to work with and have around. She wasn't noticed much as a young cow but it seems that everyone that visits now asks about the 'red cow.' The only disappointing thing so far is her lack of female offspring, but I flushed her this year and have pregnancies coming in the spring. I am using an Astro Jet son and I also have a Rubens son that I will use soon. Thanks for making her available. I continue to be impressed with the Skagvale bloodlines."

### from Wisconsin...



**SKAGVALE GRANDEUR-ET**  
Excellent-2y

A Starbuck son of Skagvale Country Elie Gay (EX-95), Skagvale Grandeur was named **Grand Champion Holstein bull at the 2004 World Dairy Expo!** His owners are: H. Bartel, Orbit Farms, L. Zemlicka and D. Bachmann (WI and MN).

# Skagvale Holstein Farms

## Introducing Skagvale Promise, our newest junior herdsire ...



**SKAGVALE PROMISE-ET**  
Reg# 131194830 aAa 134

### PUGET SOUND PROVOST-TW

#### Excellent-91

—backed by 5 generations of "Excellent" cows, all rich in FRASEA-COLONY-early CARNATION blood —his daughters are slow-maturing, and known for their incredible udders, longevity, and high protein test!

### SKAGVALE EMPHASIS ELIE GAY

#### Excellent-94

7y 365 2x 36890 4.9 1817 3.2P  
LT: 140,940 3.9F 3.2P

—her pedigree is saturated with FRASEA-COLONY-early CARNATION breeding!

### WAPA ARLINDA CONDUCTOR EX-90

### PUGET SOUND PRESTIGE PROMISE EX-91

\*Next 4 dams: 92-95-93-90!

### SKAGVALE EMPHASIS EX-90

### SKAGVALE CASSIE ELIE GAY 2-ET EX-92

\*Next 6 dams: 93-95-93-90-90-93!

### semen...

currently available in USA:

		aAa	Price
35H08	RANDELL CHRISTINE CONCLUSION	246135	\$100
100H8040	SKAGVALE COUNTRYMAN-ET (bl)	4235	10
100H8039	SKAGVALE COUNT	3541	10
100H8938	SKAGVALE CONFIDENCE-ET	3425	10
39H432	SKAGVALE SOPHISTICATE	432	10
100H9669	SKAGVALE PROMISE-ET	134	10

### free offer...

order 50 units from any combination of the above bulls and receive 2 units of Ransdell Christine Conclusion FREE!

### the book...

The Book, 80 page (400 pictures)  
1994 Changing of the Guard Sale  
Catalog & Skagvale History \$35

**volume discounts...** are available from Skagvale as follows: 100 units – 15% discount; 300 units – 25% discount; 500 units – 35% discount. Any combination of listed bulls qualifies for discounts. Semen ordered within the previous twelve months qualifies for your volume discounts!

### shipping instructions...

**SEMEN PRICES** are FOB Skagvale. Payment is due prior to shipment. Shipping and packaging is done for us by All West/Select Sires. By including an \$95 shipping fee with your order the semen can be shipped UPS prepaid to your farm.

### Skagvale semen

is also available from:

#### IN THE USA:

PA: Richard Mellinger  
• Ph: 877-530-2687

IN: Arden Zimmerman  
• Ph: 574-862-4947

#### INTERNATIONALLY:

##### SOUTH AMERICA:

Tecnicampo  
• Ph/FAX: (57-1) 6485036

##### AUSTRALIA:

Geoff & Danielle Horrocks  
• Ph/FAX: 61-358683207

From

## Skagvale Holstein Farms

"Rivers of Milk from Beautiful Cows"

### Tenneson Bros.

10117 Fruitdale, Sedro-Woolley, WA 98284-8200  
Mark (360) 856-1752 • Carolyn 855-9338  
FAX 856-0527 • skagvale@hotmail.com

Visitors welcome by appointment

## FIRST CLASS

To

Please advise us of address changes